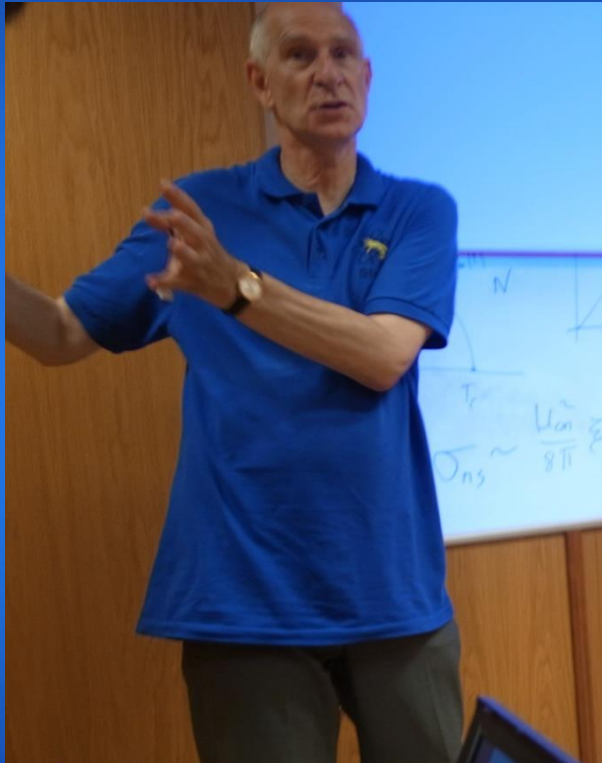


The Cavendish Laboratory



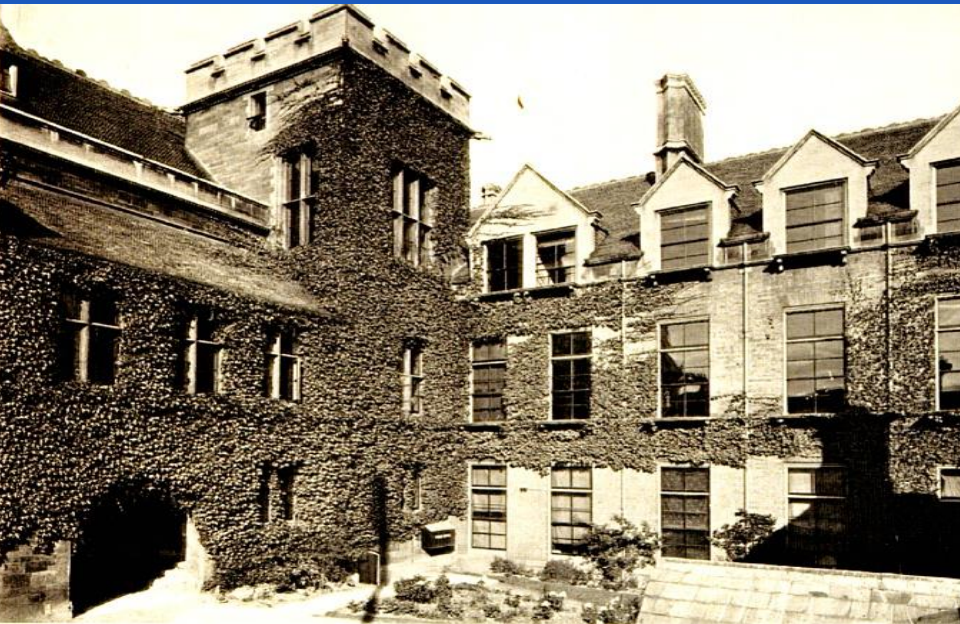
***7th Aug, 2014 in new Cavendish Laboratory
Dr. Steve Martin***



CAMBRIDGE

HEBRIDES
SCOTLAND
Ben Nevis
Loch Katrine
Loch Lomond
Dundee
Cupar
Stirling
Glasgow
NORTHUMBRIA
N.P.
THE BORDER FOREST PARK
Newcastle upon Tyne
Middlesbrough
Cross Fell
LAKELANDS N.P.
GREAT BRITAIN
YORKSHIRE DALES N.P.
York
Bradford
Leeds
Kingston upon Hull
Preston
Manchester
Oldham
Sheffield
Liverpool
Caernarfon
Stoke on Trent
Nottingham
Norwich
Waveney
Dudley
Birmingham
Coventry
ENGLAND
W A L E S
BRECON BEACONS N.P.
Cardiff
EXMOOR N.P.
DARTMOOR N.P.
R Plymouth
Portsmouth
Poole
Bournemouth
Brighton
Luton
Gloucester
Oxford
Reading
London
Thames
English Channel
Calais
Strait of Dover
Brugge
Lille
Am

The Cavendish Laboratory



Old Cavendish Laboratory



**Local street map for Old Cavendish Laboratory
Cambridge (City Centre), Cambridge, Cambridgeshire**



William Cavendish

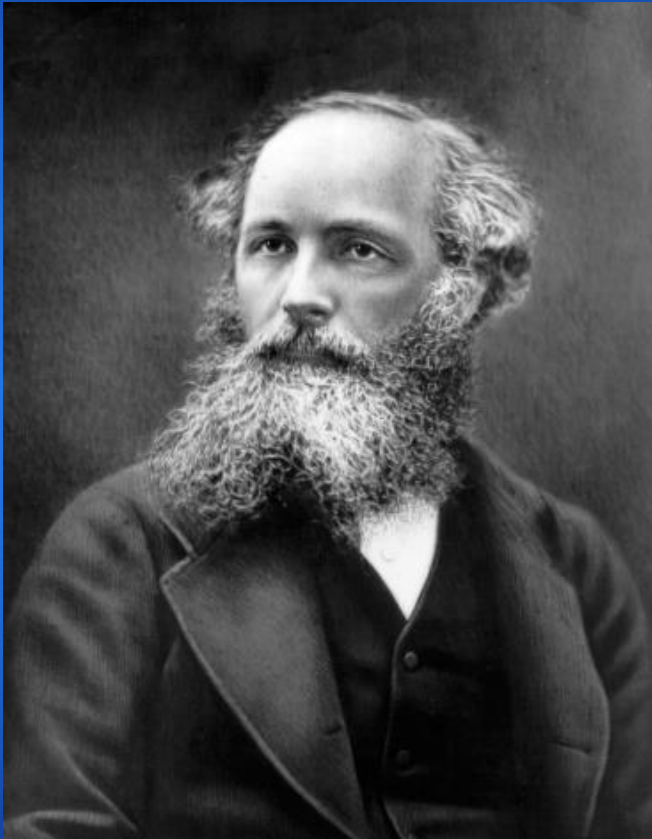


William Cavendish, the
Seventh Duke of Devonshire



The original Cavendish
Laboratory
in Free School Lane.

James Clerk Maxwell



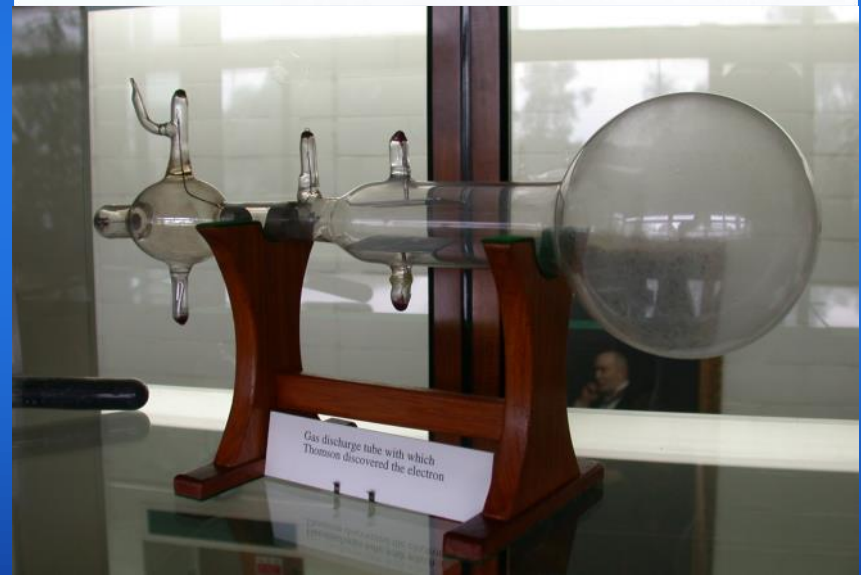
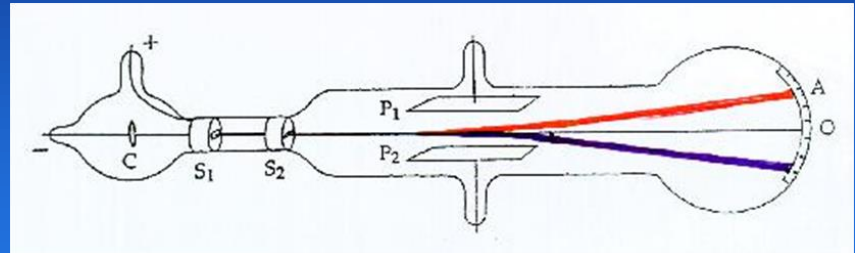
1. $\nabla \cdot \mathbf{D} = \rho_v$

2. $\nabla \cdot \mathbf{B} = 0$

3. $\nabla \times \mathbf{E} = -\frac{\partial \mathbf{B}}{\partial t}$

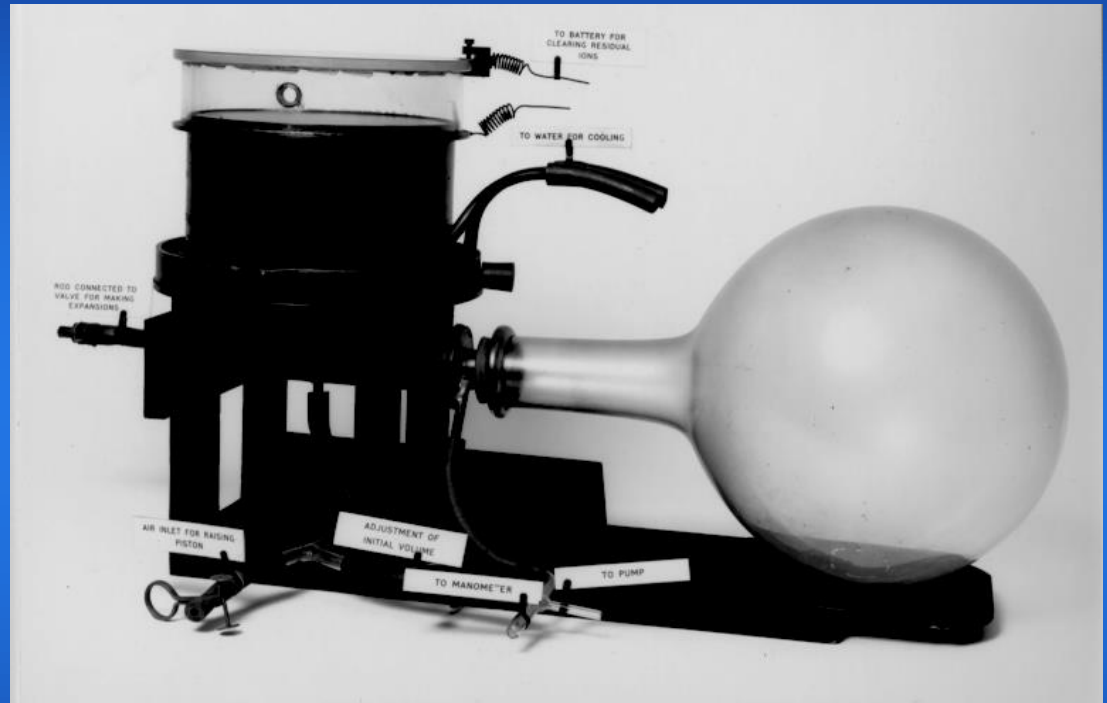
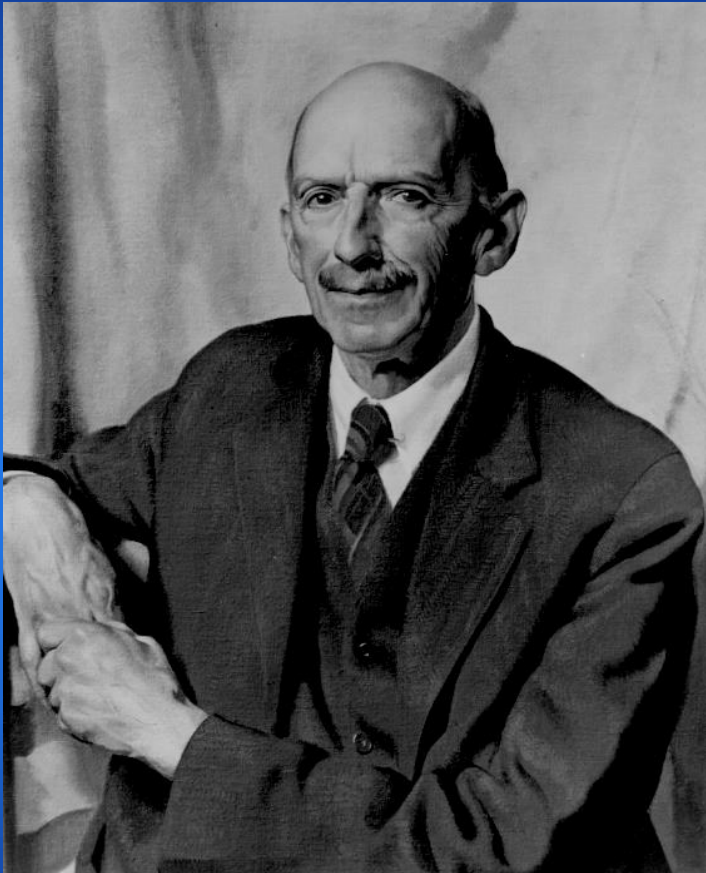
4. $\nabla \times \mathbf{H} = \frac{\partial \mathbf{D}}{\partial t} + \mathbf{J}$

John Joseph (JJ) Thomson



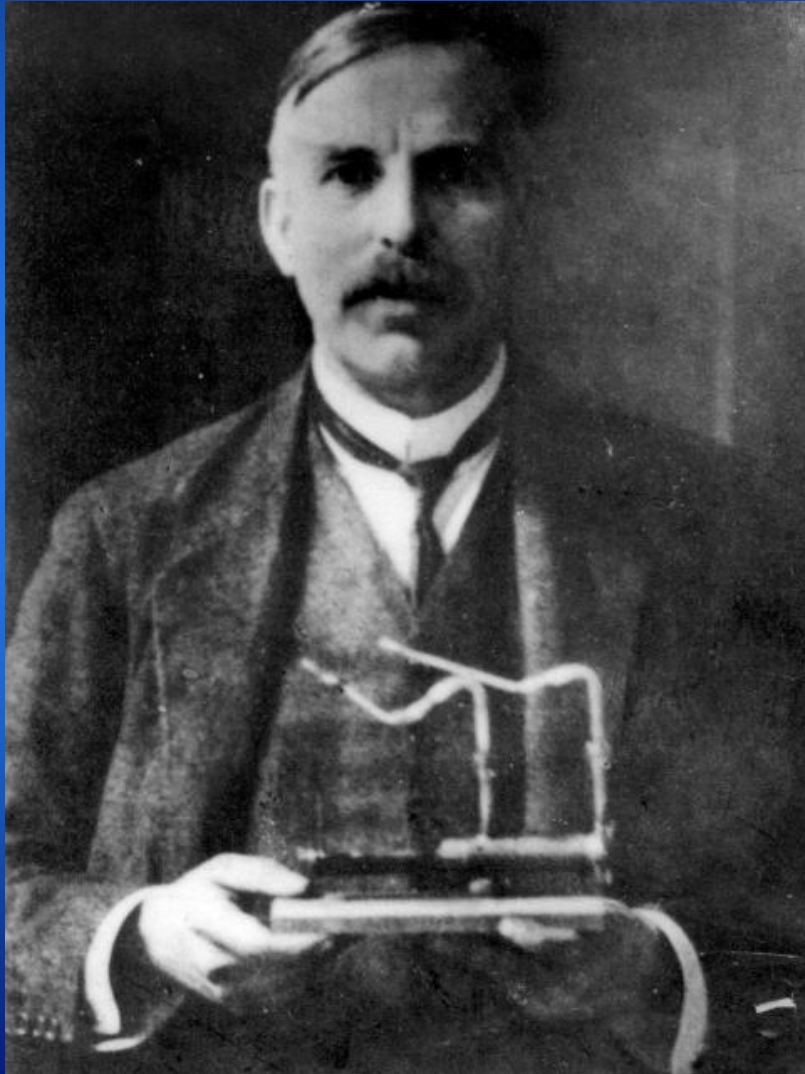
Thomson's original tube. Replica on show in the museum.

C.T.R. Wilson



Wilson's Cloud Chamber

Ernest Rutherford



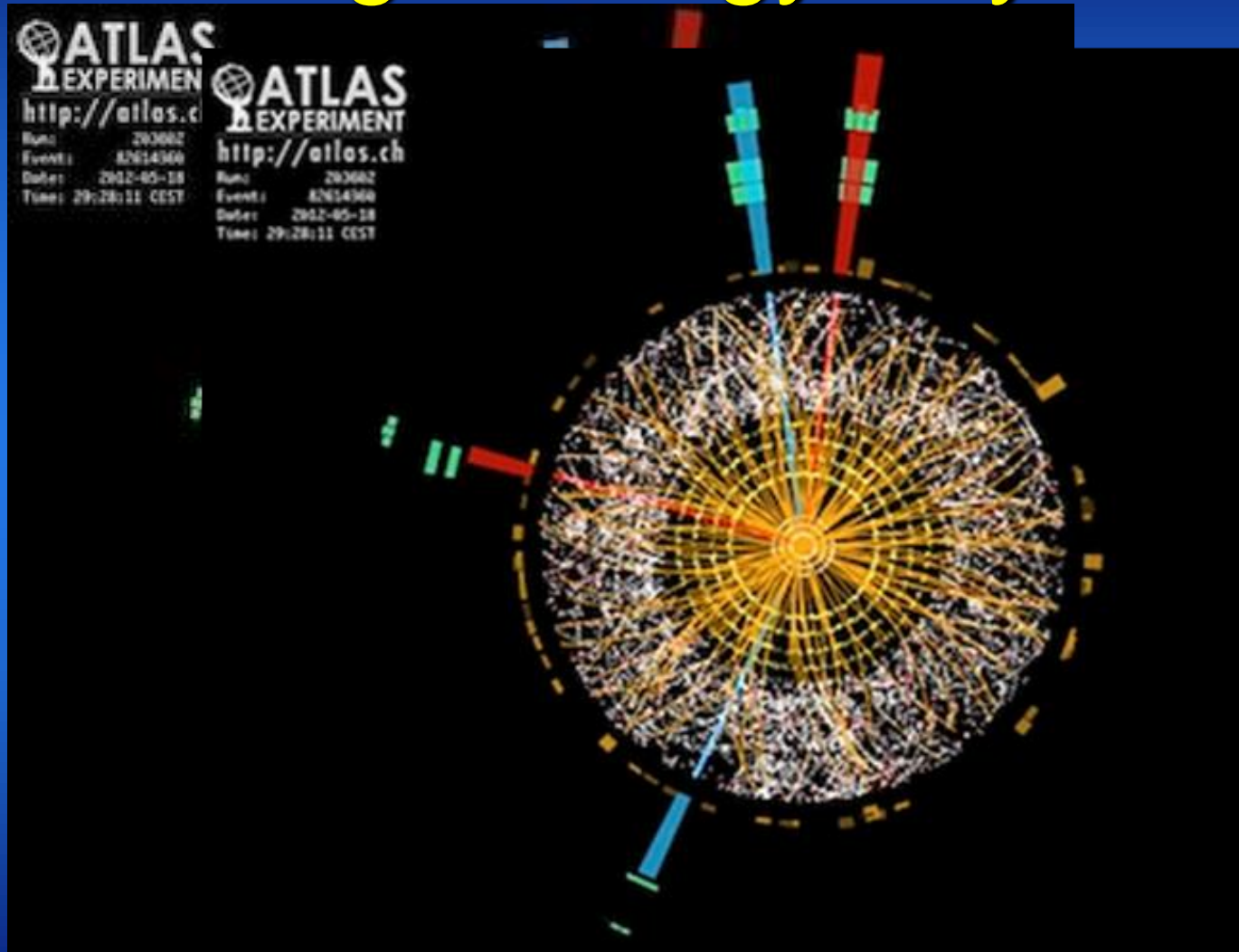
Francis Crick and James Watson



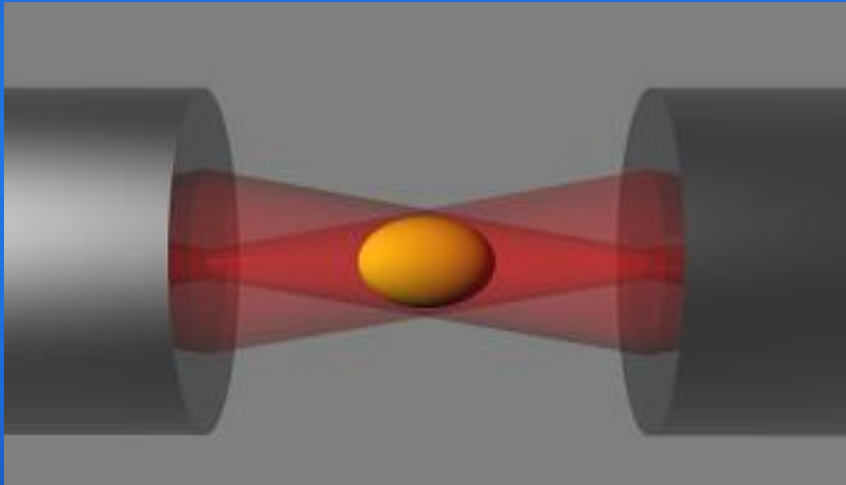
Radio Astronomy



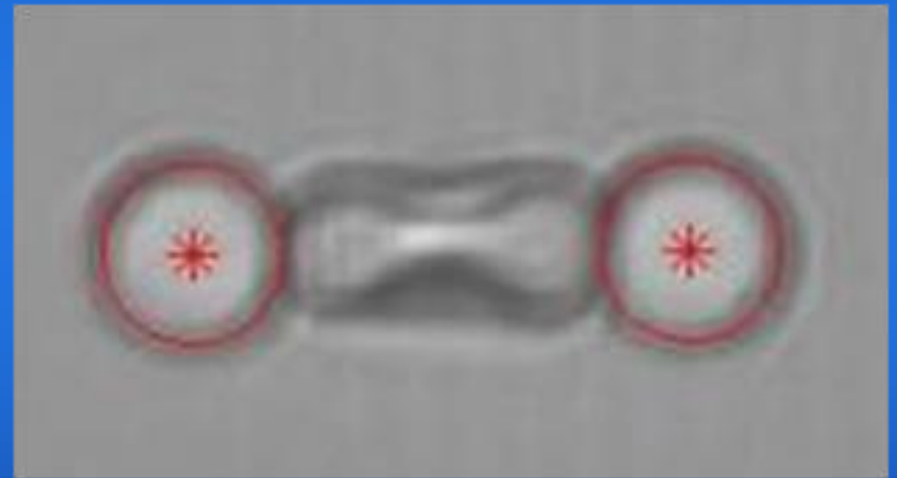
High Energy Physics



Optical Manipulation and Micromechanics



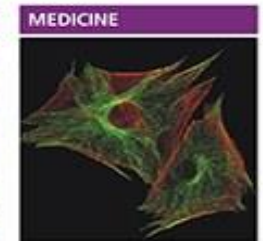
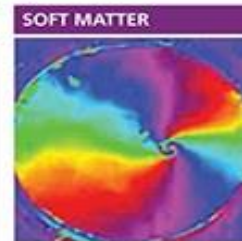
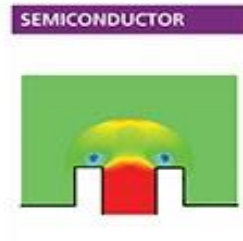
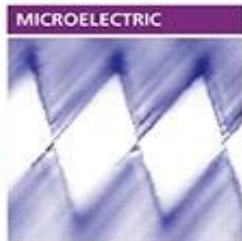
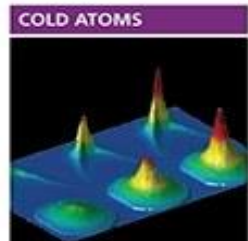
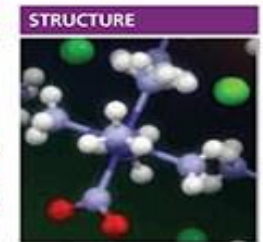
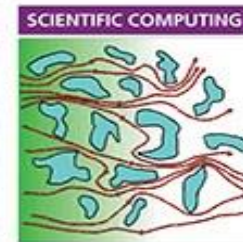
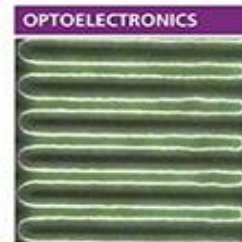
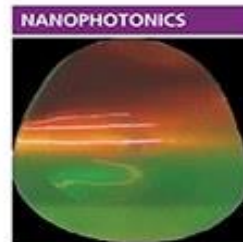
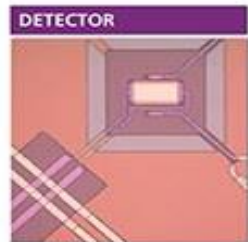
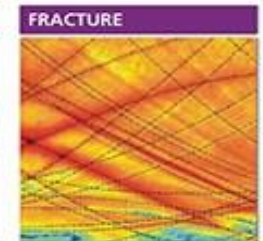
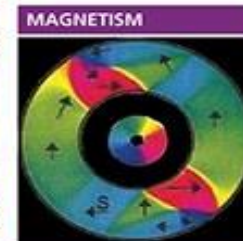
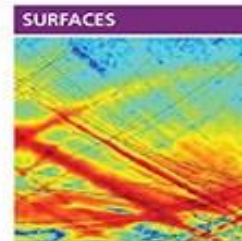
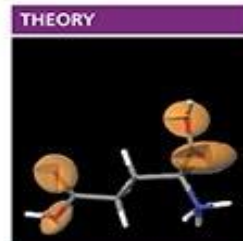
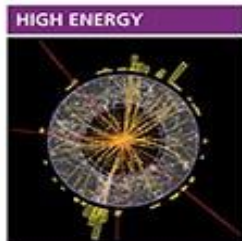
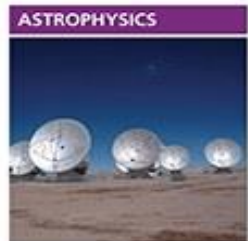
Stretch a cell to see if it is cancerous



Or even play with a red blood cell!

For lots more, find this part of the Cavendish website

EXTREME



QUANTUM

BIOLOGICAL

Educational Outreach

Cavendish Laboratory
University of Cambridge



Present Cavendish Laboratory



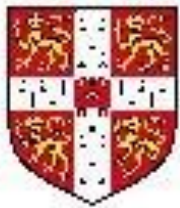
Front of the Bragg & Mott Buildings

Present Cavendish Laboratory



Educational Outreach

Cavendish Laboratory
University of Cambridge



Present Cavendish Laboratory



Battcock Centre for Experimental Astrophysics